



49 Dart Close, Strood, Kent, ME2 2HE

SORRY ALL VIEWING SLOTS ARE NOW TAKEN *OPEN HOUSE 21ST MAY 2PM TO 4PM PLEASE CALL TO BOOK YOUR VIEWING SLOT ASAP*

*USEFUL GROUND FLOOR CLOAKROOM * CONSERVATORY OFF THE LOUNGE * THREE GOOD SIZE BEDROOMS

*ENTRANCE HALL/DINING ROOM.

Three bedroom mid terrace house in good internal condition, an ideal first time purchase or family home, great opportunity to jump onto the property ladder. Accommodation comprises, entrance to door to generous hall/porch (currently used as a separate dining room) with plenty of space for table, access to main hallway, doors to kitchen, cloakroom and lounge. Cloakroom comprises low level WC and wash basin, modern suite.

The lounge is situated to the rear, a bright and spacious room with access to inner hallway, window to rear.

From the inner hallway access is gained to the rear conservatory and stairs to first floor.

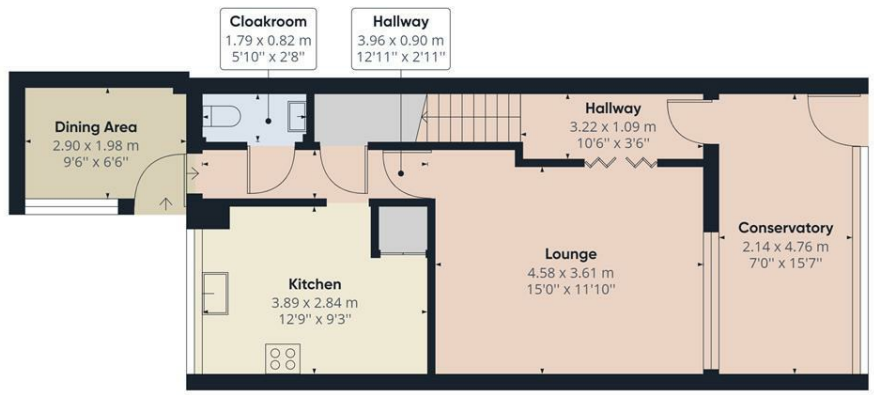
Conservatory is over fifteen feet overlooking garden, access to rear. On the first floor are three good size bedrooms and family bathroom comprising panelled bath, low level WC and wash basin.

outside the rear is very low upkeep Mediterranean style garden, mainly paved with access to garage, raised decking, ideal for family entertaining. please see photos. Garage, solid construction with up and over door.

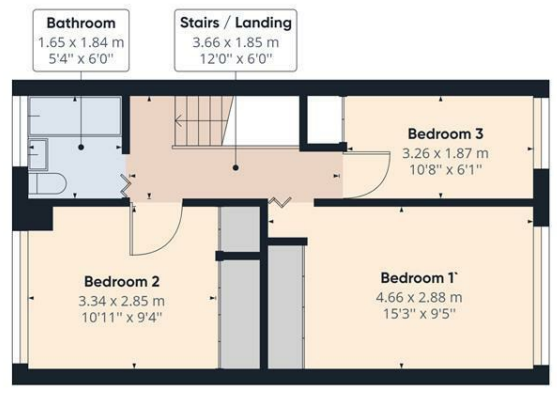
This property is council tax band C

- 3 BEDROOMS
- GOOD LOCATION FOR STATION AND TOWN
- GREAT FIRST TIME BUY
- CONSERVATORY
- LOW UPKEEP REAR GARDEN
- GARAGE TO THE REAR
- GOOD SIZE LOUNGE
- CONVENIENT DOWNSTAIRS TOILET
- WELL PRESENTED THROUGHOUT

£295,000



Approximate total area⁽¹⁾
 1038.21 ft²
 96.45 m²



(1) Excluding balconies and terraces

While every attempt has been made to ensure accuracy, all measurements are approximate, not to scale. This floor plan is for illustrative purposes only.

GIRAFFE360

